

Architec™ Range

Architectural Concrete Blocks

masonry.
style and
function

Contents

Architec Smooth Range	4
Architec Shot Blasted Range	6
Architec Split Face Range	8
Architec Honed Range	10
Architec Polished Range	12
Architec Material Quantities	14
Product Information and Finishes	16
Benefits of Masonry	18
Contact	20

Front Cover: range name, Architec Smooth colour, Alabaster

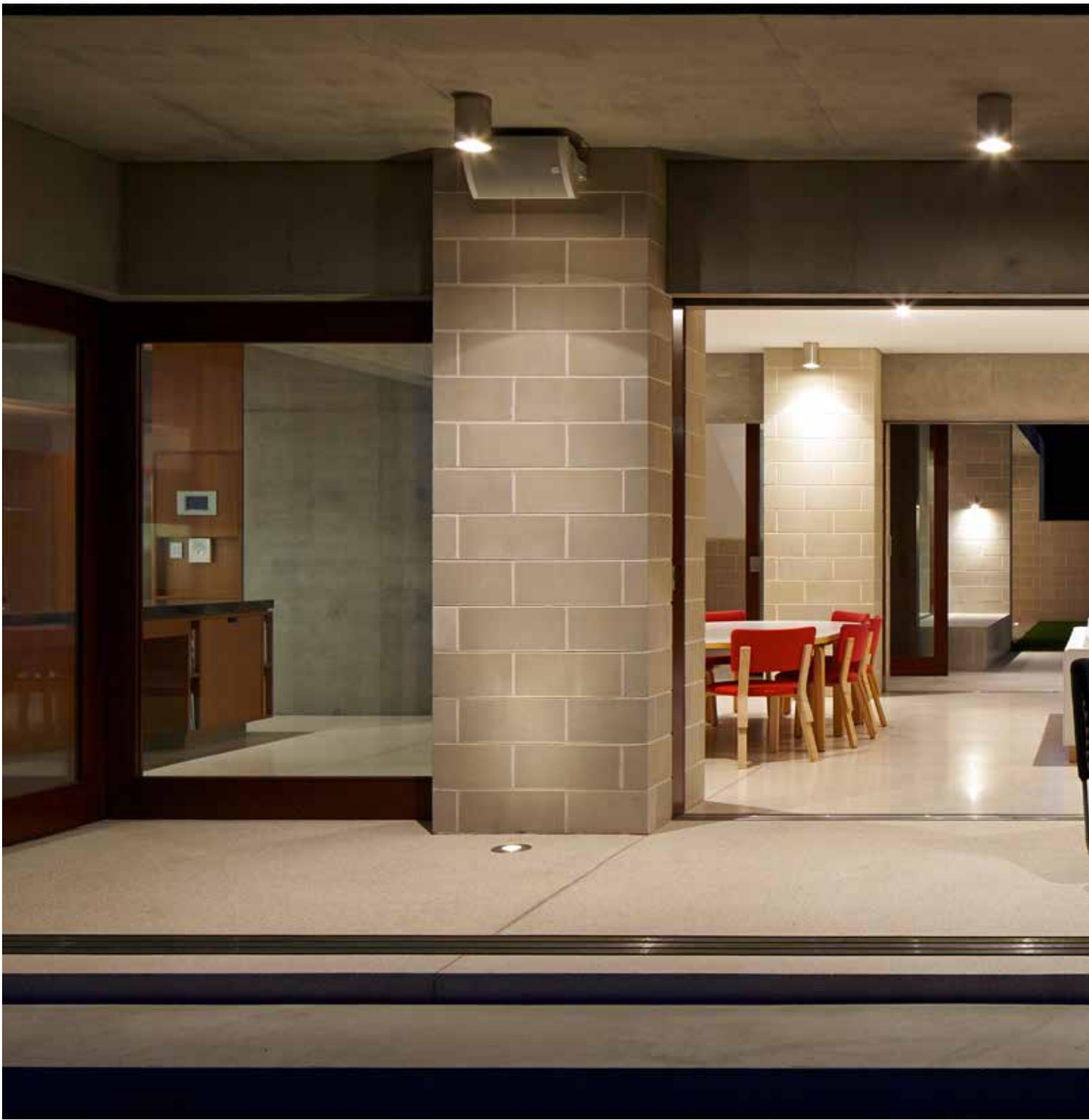
style and function

Our range of coloured, standard and premium masonry has set a new standard in quality and style for the versatile concrete block. By adding oxides to our mix of raw materials, we produce blocks with contemporary colours and textures. Ideal for a range of projects from a modern beach residence to impressive commercial projects Austral Masonry has an array of products to suit your style.

Austral Masonry blends fine sand, cement, aggregate and quality colouring agents to produce unique coloured blocks. Having long been the workhorse of the construction industry, our products are frequently specified in cutting-edge residential and commercial designs due to their strength and versatility.

Austral Masonry is part of the Brickworks Building Products Group, one of Australia's largest and most innovative building product manufacturers, which includes other industry leading brands such as Austral Bricks®, Bristile Roofing®, Austral Precast® and Auswest Timber®.





Architec Smooth Range

Smooth Face blocks feature earthy colours from the softness of Alabaster to the strength of Bluestone. Perfect for that seaside beach residence or even a large commercial sports complex, these stylish blocks blend low maintenance with real character and elegance.



Finish. **Smooth**



Alabaster



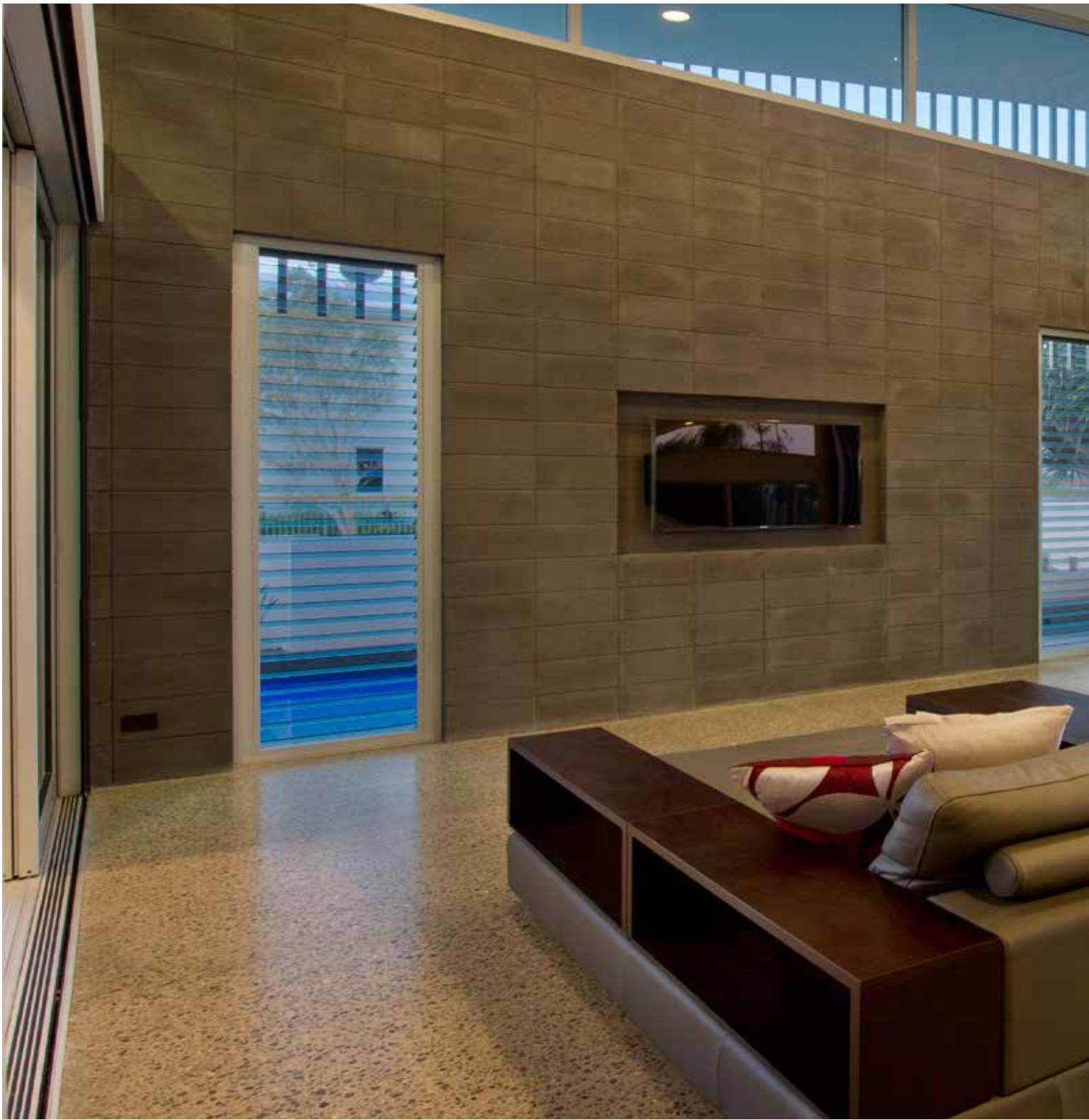
Almond



Pearl Grey



Charcoal

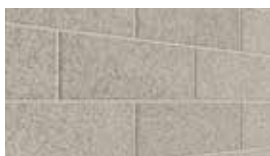
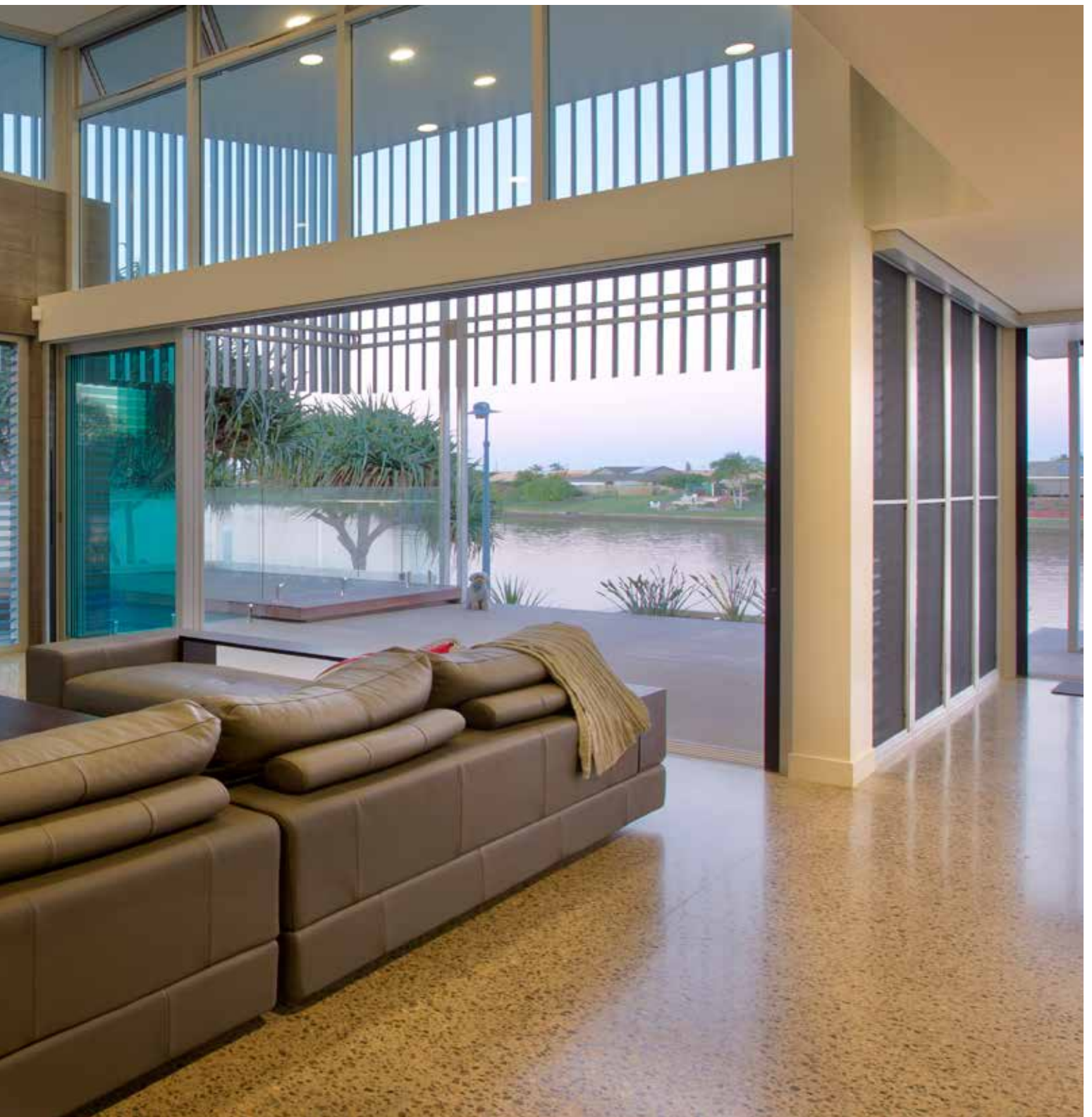


Architec Shot Blasted Range

Shot Blasted blocks are created using a process that subtly exposes the aggregates, producing a weathered, stone-like finish.



Finish. **Shot Blasted**



Alabaster



Almond



Pearl Grey



Charcoal

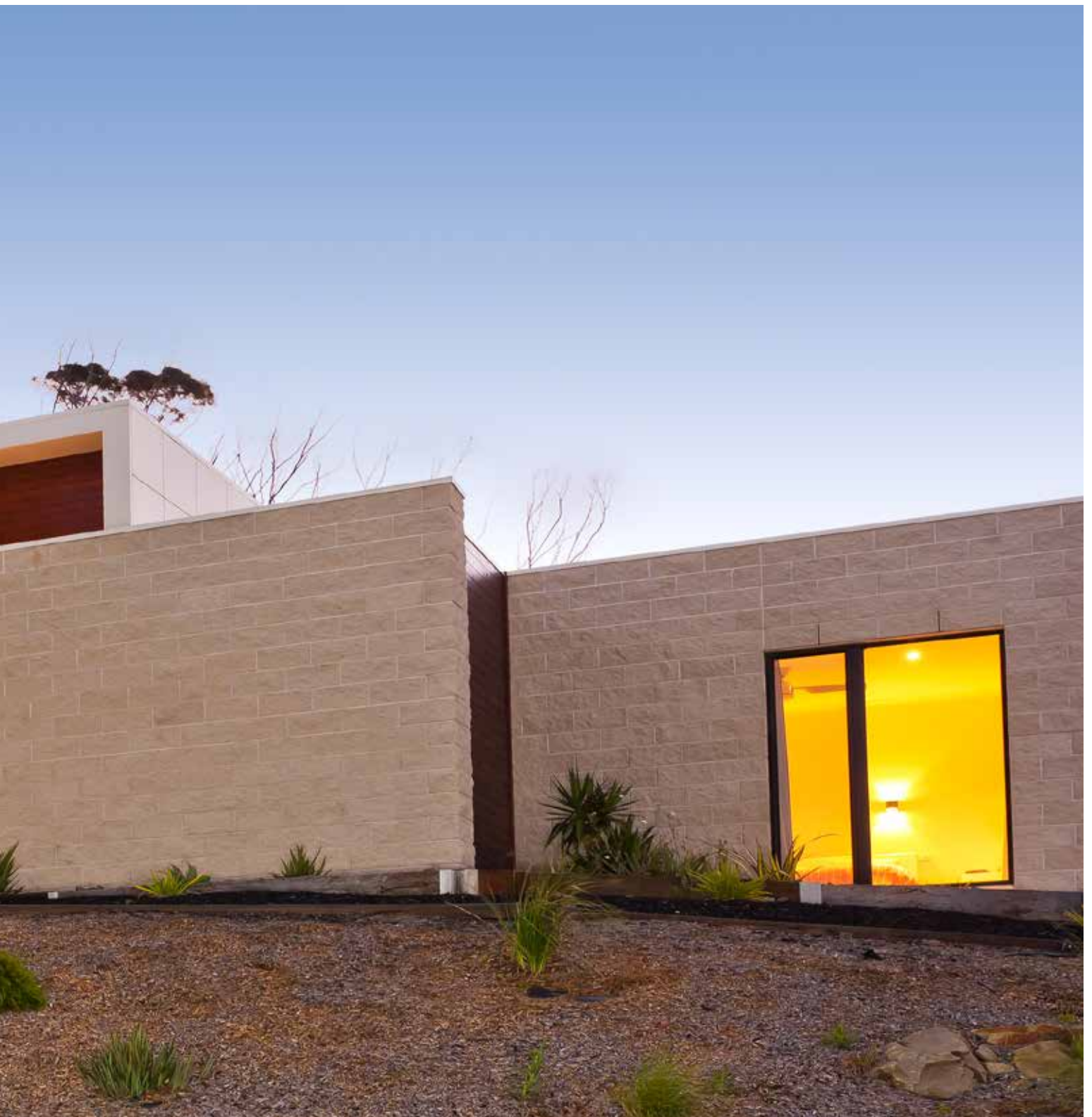


Architec Split Face Range

Split Face are made as a double block that is split to expose a unique, natural, random texture. Architects often combine our smooth and textured blocks to create stunning feature walls.



Finish. **Split Face**



Alabaster



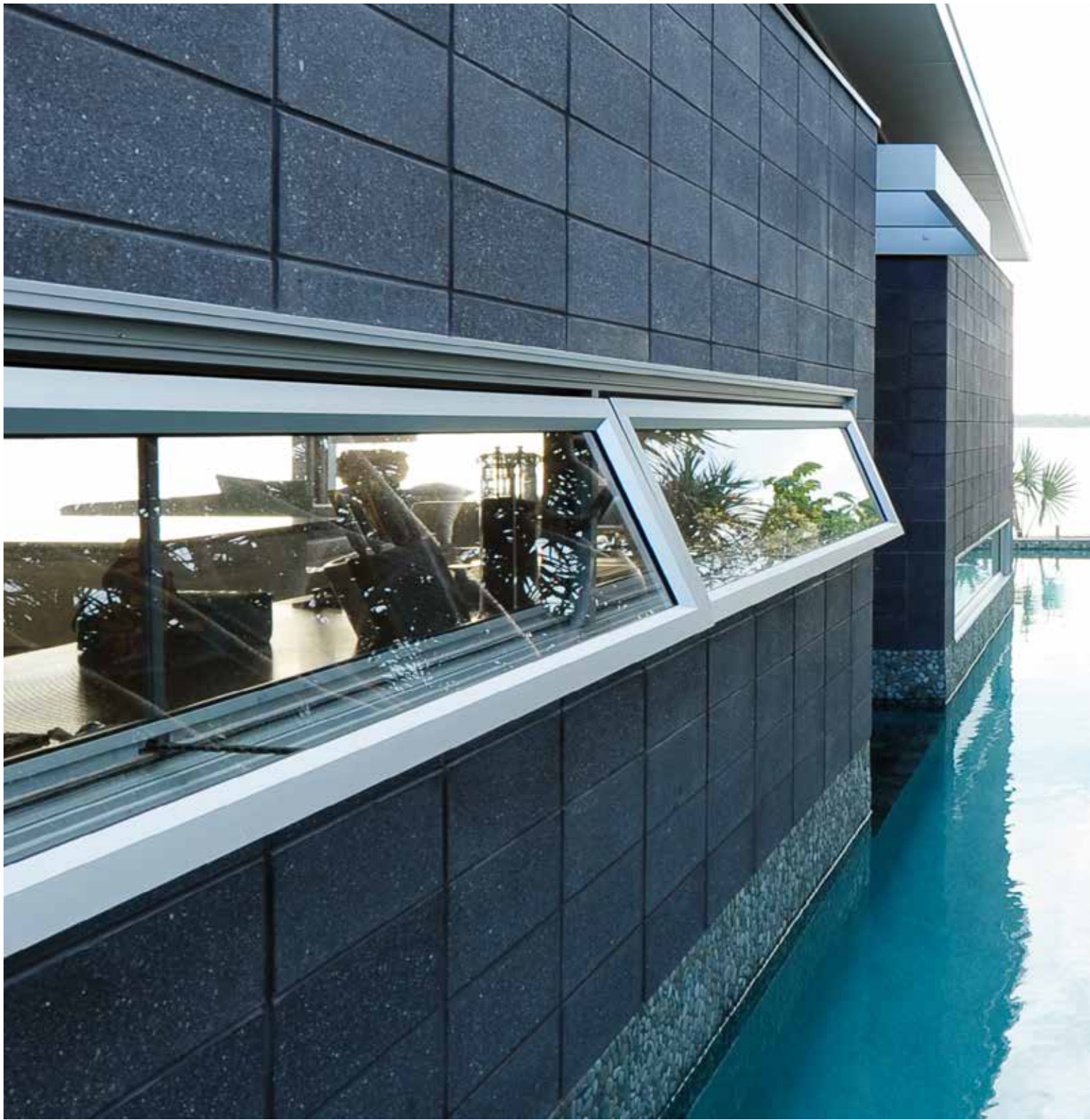
Almond



Pearl Grey



Charcoal



Architec Honed Range

The honing process used to create Architec Honed blocks grinds 2-3mm from the block surface, producing a matte exposed-aggregate finish.



Finish. **Honed**



Alabaster



Almond



Pearl Grey



Charcoal



Architec Polished Range

Polished blocks are produced using a denser block which is honed and then buffed. Polishing enriches the colour of the aggregates. The finely finished polished surface is ideal for feature walls, trims and banding.



Finish. **Polished**



Alabaster



Almond



Pearl Grey



Charcoal

Architec™ Material Quantities

Material Quantities for Mortar

Notes

- One cubic metre of mortar will lay approximately 800 to 1200 blocks.

Masonry Units

Architec™ is manufactured in accordance with the provisions of Australian Standard AS/NZS4455:2008.

Mortar

Mortar mix options in AS3700 include cement;lime and sand in 1:1:6 proportions for M3 (general) and in 1:0.5:4.5 proportions for M4 (Exposure Grade). While these make better mortar, the adjacent mixes, without lime, are more common. The adjacent mixes are based on one 20kg bag per mix.

Core Filling

When core filling Architec™ walls, some seepage may occur due to high hydrostatic pressure. Ensure it is cleaned off before it dries, otherwise staining will occur. It is essential that the block work is kept clean from mortar

smears. This will eliminate the need for aggressive acid based cleaning solutions which can damage the face or change the colour of the concrete blocks.

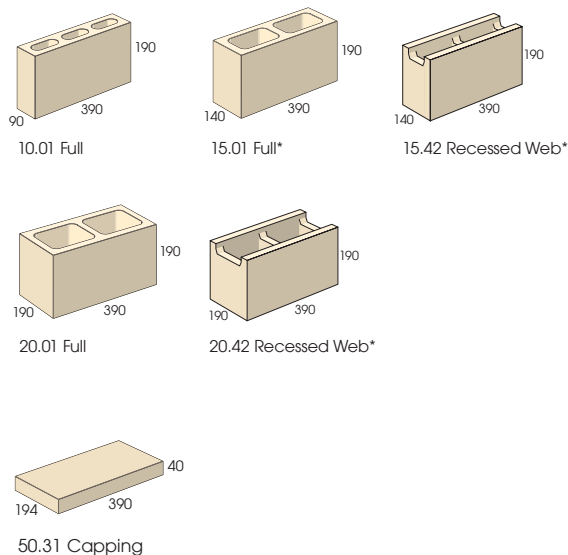
#Oxide quantities below are **approximate** and assume sand is near white. Trial batches should be made and assessed for colour-match for blocks when dry. Contrasting mortar colour is not recommended due to difficulty of cleaning smears.

Alabaster	White oxide	0.8kg
Almond	Yellow oxide	0.1kg
Pearl Grey	Black oxide	0.01kg
Bluestone	Black oxide	0.5kg

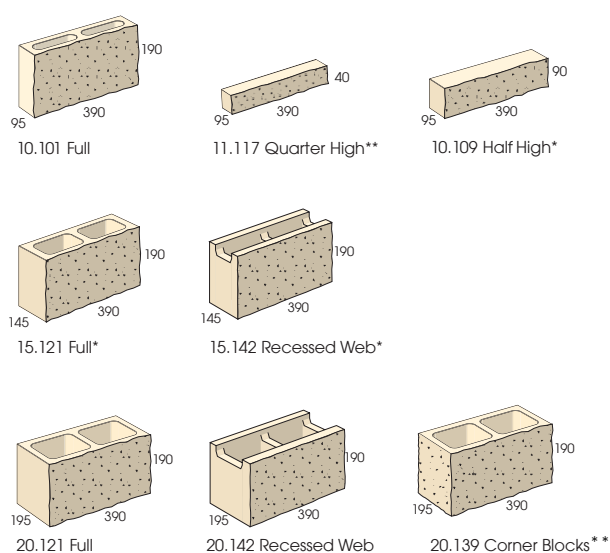
Joints should be finished with an ironing rod to make them smooth, dense and more water resistant. (Mandatory in severe marine environments). Raked joints are NOT permitted in hollow blocks (unless corefilled as per AS3700)

Component Range

Smooth, Shot-Blast, Honed and Polished Architec™



Split Face Architec™



* Made to order only.

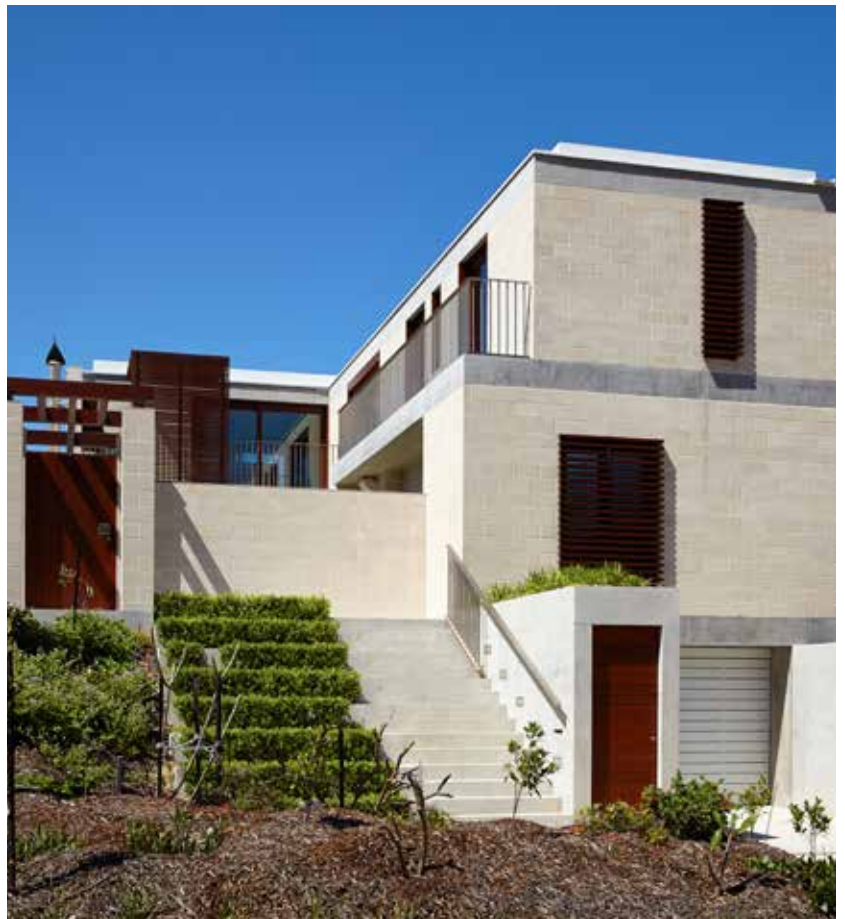
** Not available in all locations.

M3 Mortar Mix (general purpose)

One 20kg bag of Off-White cement and oxide# 100kg clean sand. (18 shovels @ 5.6kg) 0.1kg of Dynex or similar methyl cellulose plasticiser. This yields 0.08 cubic metres and will lay 60 to 100 Architec™ Blocks.

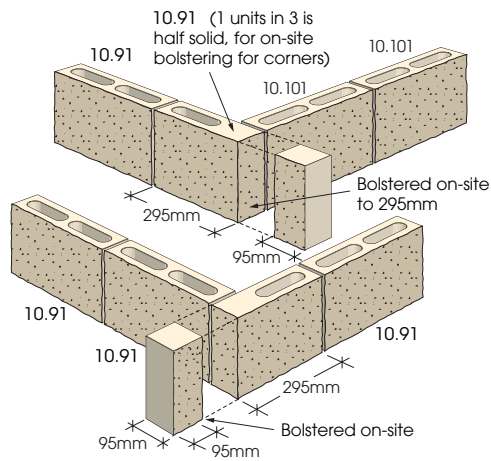
M4 Mortar Mix (exposure grade)

One 20kg of Off-White cement and oxide# 80kg clean sand. (14 shovels @ 5.7kg) 0.1kg of Dynex or similar methyl cellulose plasticiser. This yields 0.06 cubic metres and will lay 50 to 75 Architec™ Blocks.

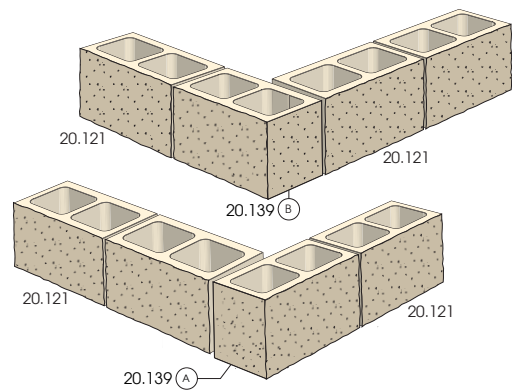


Corner Bonding Detail

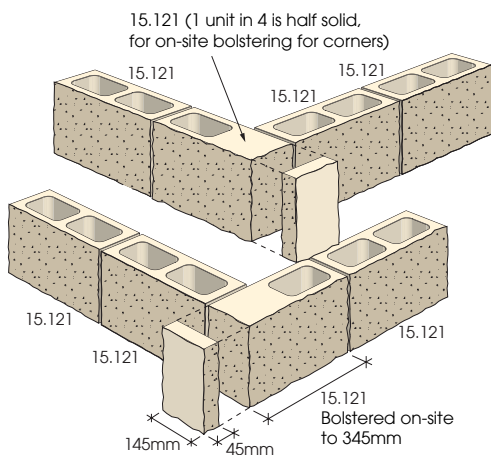
Split Face Architec™



Series 100 Corner



Series 200 Corner

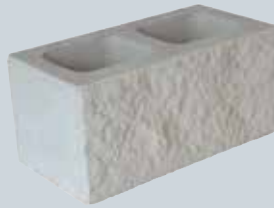


Series 150 Corner

Finishes guide

The Architec Range is available in a range of finishes to suit your style and project.

Split face



The splitting process used to create these blocks produces a bold textured exposed aggregate finish.

Available in:

Architec Split Face

Smooth



A finely textured finish created through the standard moulding process.

Available in:

Architec Smooth

Honed



The honing process grinds 2-3mm from the block surface producing a matt exposed aggregate finish.

Available in:

Architec Honed

Polished



Unique to Austral Masonry the Polishing Aggregate finish results from extra aggregate that's entered into the mix which is exposed through the Polishing process.

Available in:

Architec Polished

Austral Masonry System

Austral Masonry offers a total protection system consisting of two separate parts with an optional third:

1. GB Masonry collection of water resisting blocks

(dramatically reduces secondary efflorescence)

2. Aus-Lock mortar additive.

This works as a plasticiser, bonding agent and cement retarder slowing the setting time of the mortar giving more time to clean up. In addition, the additive will impart some waterproofing property to the mortar giving an added resistance to lime leaching.

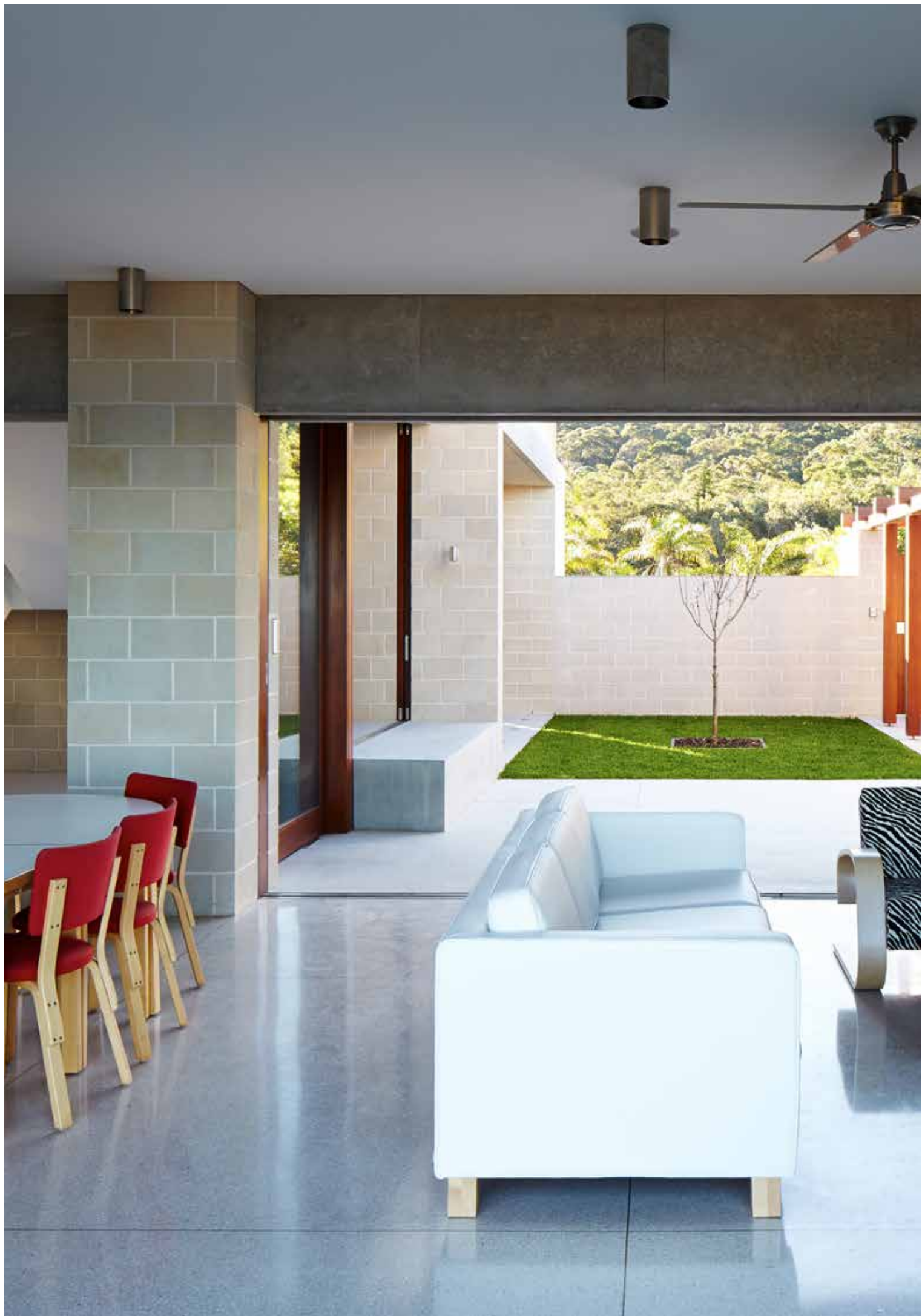
3. Aus-Seal and Aus-Shield

are an applied finish to further enhance the product and give some self cleaning properties.

Call your representative to discuss your requirements and learn more.







Benefits of masonry

When considering building products to use on your project it's important to understand all the pro's and con's before making your final selections. But with concrete masonry products you know you're making the right choice when you consider the host of benefits they offer including: sound insulation, thermal mass, environmental impact, colours and finishes, ongoing maintenance and many more. See the list of benefits below so you can build in confidence with concrete masonry.

Sound insulation

Due to their mass, concrete masonry blocks out noise better than traditional building materials, resulting in a quieter home environment.

Range of colours and finishes

Concrete masonry products are available in a range of over 78 colour and finish combinations. This offers you a wide range of products to choose from to suit the style of your home.

Thermal mass

Due to their mass concrete masonry products slow the transfer of external temperature fluctuations into internal living areas thereby reducing the need for artificial heating and cooling devices.

Affordable

When comparing other products on the market concrete masonry is an affordable option. This is especially true when considering the complete building system as concrete masonry can reduce or negate the need for accessory products such as sarking and insulation.

Low maintenance

When you build with concrete masonry products you are building with a material that requires minimal maintenance and upkeep so you have more time for the important things in life.

Lower energy costs

Concrete masonry products are high thermal mass products which slow the transfer of temperature fluctuations from the outside into internal living areas. This reduces the need for use of artificial heating and cooling devices and thereby reduces associated energy costs.

Fire resistant

Concrete masonry products are made from non combustible materials so they are fire resistant and therefore ideal for bushfire prone areas.

Weather resistant

Exterior Walls that will hold up to heavy storms, U.V. degradation, blistering heat, and sub-zero temperatures.

Termite resistant

Masonry walls won't be degraded by termites as there's no wood for the termites to eat.

Low environmental impact

Masonry products production has minimal impact on the environment because they do not deplete precious natural and limited resources like many other materials. Concrete masonry products are cured in temperature controlled kilns with comparatively little energy used compared to kiln fired products.

Impact resistance

Because masonry products are made from concrete they are strong and durable which means that they can endure significant impact from external forces with minimal if any impact.

Speed of construction

Concrete masonry products are much faster to build with than some commonly used walling materials and have the added benefit of being both structural and aesthetic.

Austral Masonry Head Office New South Wales

44 Clunies Ross Street
Prospect NSW 2148
PO BOX 6137
Seven Hills NSW 2147

Tel. +61 2 9840 2333
Fax. +61 2 9840 2344
Email. sales@australmasonry.com.au

Trading hours

For trading hours please visit www.australmasonry.com.au

Architec™ Designer Masonry Additional Information

Block Laying

Masonry walls are to be constructed in accordance with AS3700:2011.

Stock Colours and Textures

Lead times apply to all coloured blocks. Longer lead times apply to Honed, Polished and Shot-Blast finishes as the product must be cured for four weeks to harden sufficiently before processing. Austral Masonry recommends part size blocks are cut/bolstered on site to maintain colour consistency.

Textures

Finishes including Honing, Polishing and Shot-Blasting are produced on a 'made to order' basis. Lead times apply as the product must be cured for four weeks to harden sufficiently before processing. Contact your nearest Austral Masonry office for approximate lead times and premiums on special textured finishes. Architec™ is available standard with one face. Additional faces can be 'made to order' on honed, polished, and shot blast finishes. A surcharge may apply. Not all finishes are available in all regions.

Colour and Texture Variations

The colours shown in this brochure are provided as an indication of the colours and textures available. Some variations in colour may occur due to changes in raw materials. In addition variation can occur between production batches.

Brochure Colours

The printed colours in this brochure are only a guide. Please ask to see a sample of your chosen colour/texture before specifying or ordering.

Construction Notes

1. Blocks must be kept dry on site before use and when laid. Freshly laid walls must be covered overnight and when rain interrupts work in order to prevent moisture entering the cores of the blocks.
2. Do not put mortar on the web of the blocks.
3. Ensure that perpends are buttered on each side with a void in the middle. The mortar joints should be well ironed to provide a tight sealed joint.
4. Ensure mortar smears are removed before mortar sets as acid cleaning later can discolour the masonry can discolour and damage the masonry.
5. It is important that retaining walls have good drainage behind the wall and waterproofed.
6. For non-grouted masonry, a horizontal weep hole at the floor joint of each core should be provided to drain water that may be trapped inside the blocks. Partially fill the bottom course blocks with 20mm blue metal or similar drainage material to prevent mortar droppings from blocking the weep holes.



1300 MASONRY (1300 627 667)

www.australmasonry.com.au



proud supporters



CHILDREN'S CANCER
INSTITUTE AUSTRALIA

The range of building products from
BRICKWORKS
BUILDING PRODUCTS

australbricks
Since 1968

auswesttimbers

australprecast

australfaçades

australmasonry



nubrik
authentic brickwork

bristileroofting



BOWRAL BRICKS