

# Pronto Panel™

Australia's trusted lightweight  
building product



**FASTER.  
BETTER.  
STRONGER.**

# BUILDING WITH PRONTO PANEL™

Pronto Panel is a non-load bearing panel system that can be used both internally and externally.

Pronto Panel's durable, lightweight and simple nature makes it perfectly suitable for both residential and commercial applications.

Pronto Panel's minimal components and availability of various sizes minimises cutting, allowing for efficient assembly and installation.

Pronto Panel satisfies the performance requirements of the Building Code of Australia. The certified structural capacity of Pronto Panel ensures compatibility for projects requiring fire resistance and acoustic insulation.

Pronto Panel can be used for:

- **Intertenancy Walls**
- **Common Walls**
- **Service Walls**
- **Wet Area Walls**
- **Internal/Partition Walls**
- **External Walls**





# TESTED, CERTIFIED AND TRUSTED.



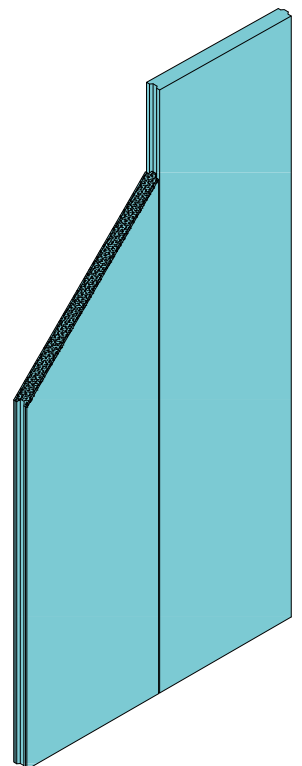
Pronto Panel has been extensively tested at CSIRO, University of Newcastle and other NATA accredited laboratories.

The whole system of manufacture, testing and installation procedure has been designed and created to Brickworks Building Products' highest standards and has been accredited for compliance with the National Construction Code for CodeMark certification.

## Material Properties

Pronto Panel consists of a composite of lightweight aggregates bonded into a cementitious matrix. The panels are sheeted with a Calcium Silicate board which reduces water absorption. The tongue and groove on the vertical edges of the panels interlock to assist in preventing the passage of noise and fire.

Due to their unique design, the panels can also be cut to size as required, without compromising their structural capacity.

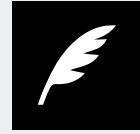




# FASTER. BETTER. STRONGER.



High fire  
resistance



Lightweight

The faster, better and stronger lightweight panel that provides a superior, unique system for your lightweight building product needs.

## **Faster and easier to install**

The Pronto Panel system allows for efficiency in installation due to the 60mm thickness that enables easier handling and transportation. The panels have no reinforcement so they only require a single cut which does not produce sparks and the panels can be customised to any size on-site.

## **Stronger**

A better quality and more enduring product is proven by Pronto Panel's structural features including high bending load capacity and interlocking edges. When spanning over three metres Pronto Panel has an ultimate design load of 0.79kPa. The panels can be cut to any size without compromising structural requirements as there is no reinforcement.

These structural qualities make Pronto Panel stronger than competing products.

## **Fire and Sound proof**

Pronto Panel has been tested, certified and satisfies Australian standards. The 60mm panel on its own achieves a fire resistance level (FRL) of -/60/60 and when the 60mm Pronto Panel is combined in a 185mm wide wall system with standard plasterboard it achieves FRL -/120/120. An exceptional acoustic rating of  $R_w + C_{tr}$  of  $\geq 50$  exceeds the minimum requirements of the National Construction Code.

## **Low water absorption**

The panels are sheeted with Calcium Silicate board ensuring an extremely high water resistance through the face and the whole panel.

## **Warranty**

Pronto Panel is covered by the assurance and backing of the 15 Year Brickworks Building Products Warranty.

## **The benefits stack up**

The advantages of the Pronto Panel system are evident. The lightweight yet durable and efficient system has been tested and certified to a high standard assuring confidence in structure and safety standards.



15 year Warranty



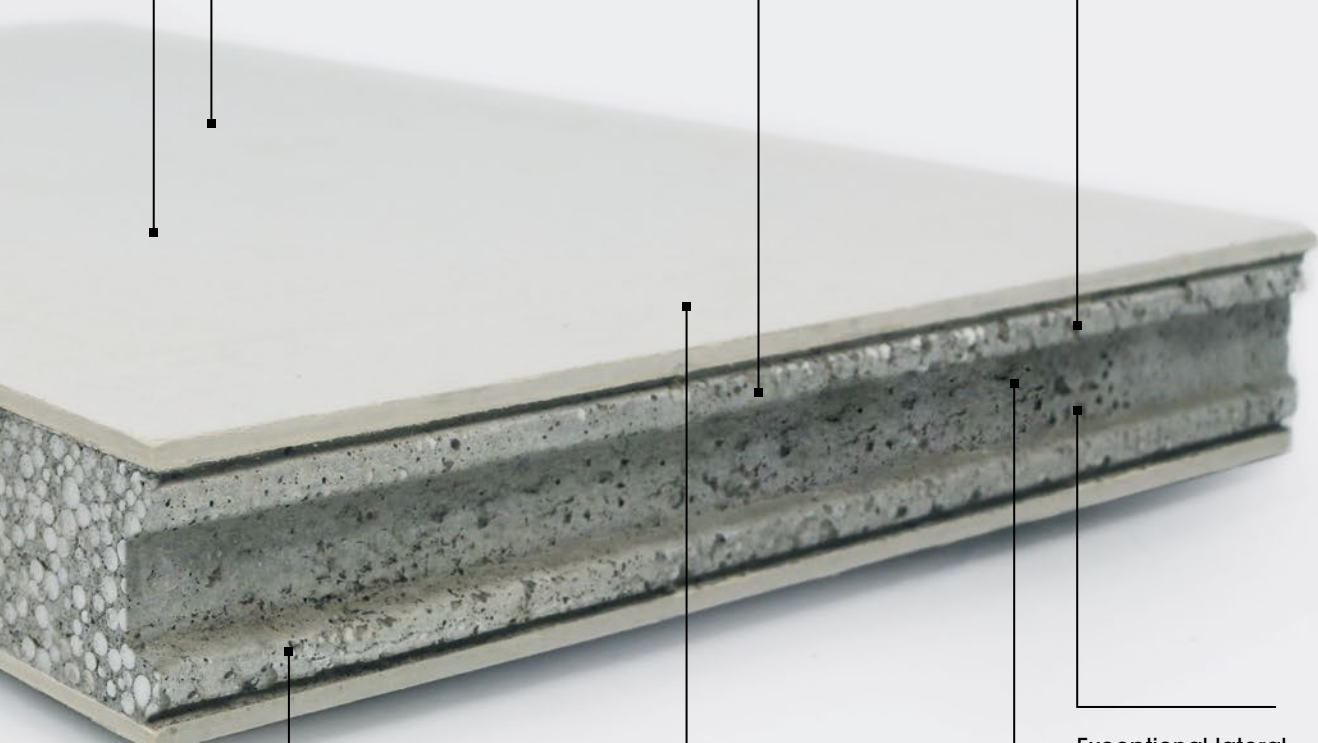
Durable



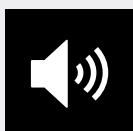
Fast and simple installation



Exceptionally low water permeability



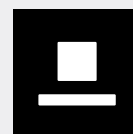
Effective acoustic insulation



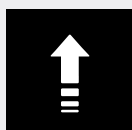
Minimal components



Exceptional lateral load capacity



High pull-out strength



# THE PRONTO PANEL SYSTEM.



## COMPONENTS.



### Pronto Panel

Pronto Panels come in various sizes.

Length (mm)	Weight (kg)
2,700	85
2,850	90
3,000	95



### Pronto Angle

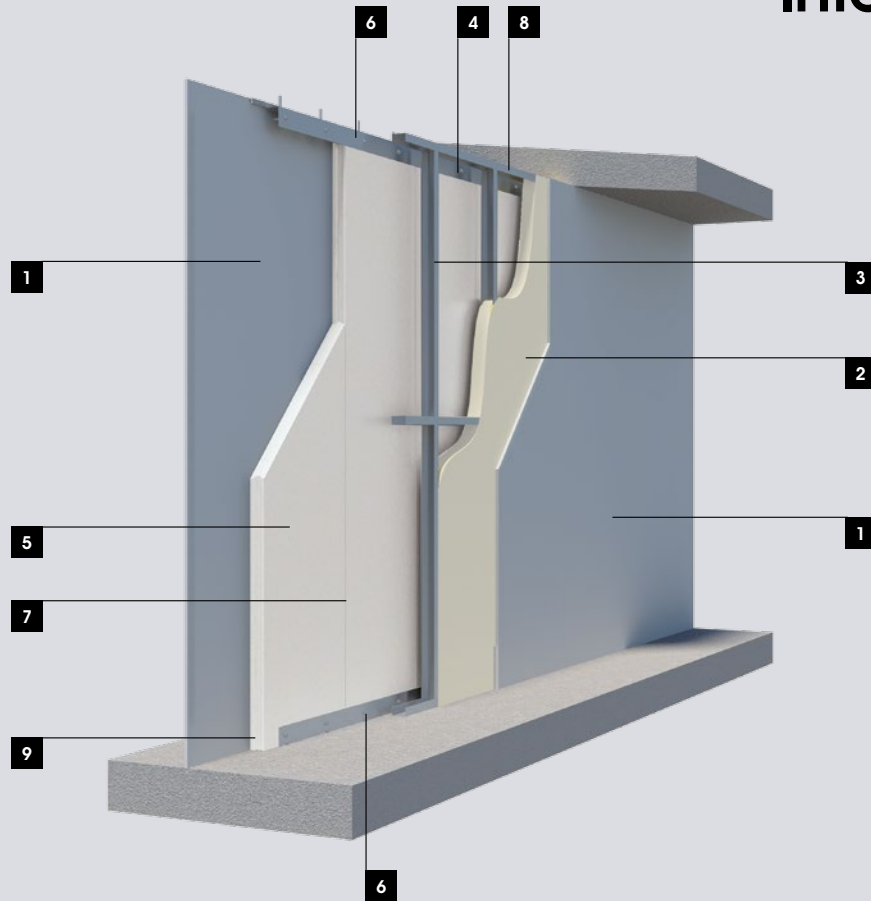
Pronto Angles are to be used for both head and base connections in all Pronto Panel Wall Systems. They are for positioning and restraining the top and bottom of the panels. Panels are to be fixed to the angles with metal mechanical fasteners.



### Pronto Panel Adhesive

Pronto Panel Adhesive (supplied in 20kg bags) is used to fill in the cavity between adjacent Pronto Panels.

# Internal wall



The Pronto Panel system has an exceptional combination of innovation and performance, proven at high standards, with efficient handling and installation.

- |   |   |   |
|---|---|---|
| 1. 13mm STANDARD PLASTERBOARD<br>SCREW FIXED AT 600 CENTRES | 4. CAVITY (35mm)  | 7. PRONTO PANEL ADHESIVE JOINT  |
| 2. 75mm THICK, 25kg/m <sup>3</sup><br>POLYESTER INSULATION  | 5. PRONTO PANEL   | 8. 20mm GAP BETWEEN PANEL AND<br>SOFFIT WITH 4 HOUR FIRE SEALANT<br>AND BACKING ROD |
| 3. 64mm STEEL STUD AT 600 CENTRES                           | 6. 75 x 50 x 1.2mm BMT SLOTTED<br>ANGLES WITH 14-10 x 50mm<br>HEX HEAD TYPE 17 SCREWS | 9. NO ADHESIVE BETWEEN PANEL<br>AND ANGLE   |

Application	Component	Fire	Sound (R <sub>w</sub> + C <sub>tr</sub> )	Reports	Wall Thickness
Inter-tenancy Wall / Common Wall	60mm Pronto Panel	-/120/120 <sup>1</sup>	50	CSIRO test report FSV1677 Acoustic report 5518-1B RevC <sup>2</sup>	185mm

<sup>1</sup> Bare Pronto Panel achieves -/60/60

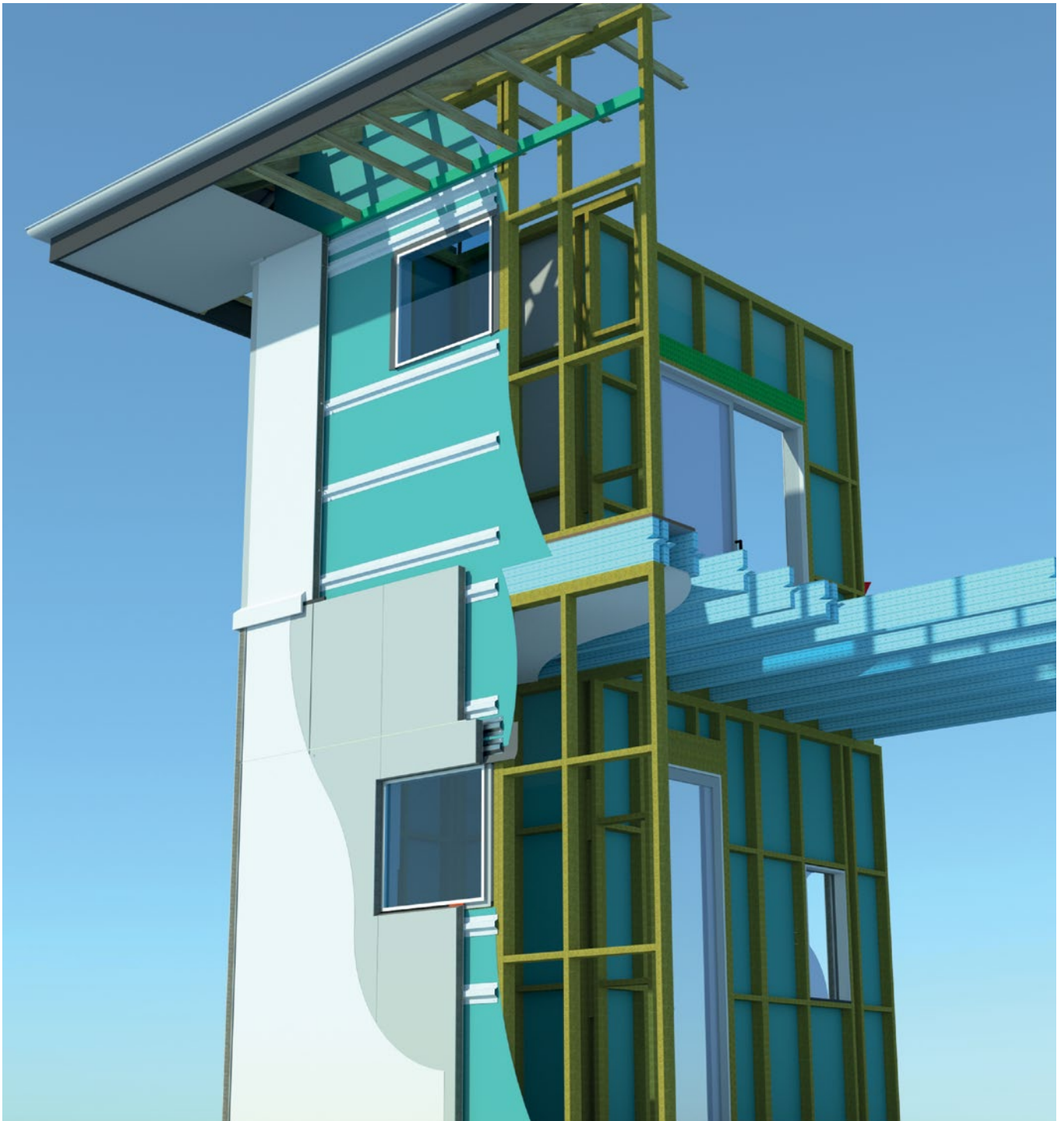
<sup>2</sup> Sound Reduction Index according to ISO 140-3 (laboratory measurement). Testing was conducted in accordance with ISO 140-4 and ISO 140-3. The tests were conducted by Day Design and the ratings are calculated in accordance with ISO 717-1.



# External wall

Pronto Panel can be used as an external façade system on framed structures, ranging from single storey to multi-storey construction. Pronto Panel has been designed to be used as a non-load bearing façade where by vertical Pronto Panels are fastened onto horizontal lightweight structural top hats.

As a façade, Pronto Panel would come in contact with various environmental factors. These factors include imposed wind action, wet weather, bush fire and heat transference. Extensive testing has been undertaken to ensure that the façade constructed using Pronto Panels performs in accordance with Australian Standards.





# Internal Installation



## 1. Fixing Steel Angles to Soffit and Concrete Slab

Pronto Panel installation requires fixing Pronto Angles to soffit and concrete slab. The steel angle should be connected to the soffit and concrete slab using mechanical fasteners at 600mm centres.



## 2. Mixing Pronto Panel Adhesive

The Pronto Panel Adhesive is a two-part thin bed adhesive mix. For the best results the use of an electric drill mixer (900W electric drill, Festo or the like) is recommended. Typical adhesive coverage rate is 60m<sup>2</sup>/20kg bag if the adhesive is used immediately after mixing.



## 3. Install Pronto Panel

Lift the panels easily into position with a Pronto Panel cradle trolley.

To fix the Pronto Panel to the steel angle, use 14-10 x 50mm hex head Type 17 screws. The screws should be nominally 300 centres. At least 4 screws should be inserted per panel, 2 at the top and 2 at the bottom.

## 4. Panel to Panel Connection

When the Pronto Panel is in place, apply Pronto Panel Adhesive into the groove of the panel.

Position the second panel into place. Screw the second panel to steel angle.

Once the Pronto Panels are placed in position and connected, a trowel can be used to smooth out and scrape off any excess adhesives from the joints.

## 5. Fire Sealing

Where fire resistance is required, backing rod and fire resistant acrylic sealant must be installed at the top of the panel to ensure good acoustic insulation and fire resistance. Pronto Panel can accommodate a 600 x 600mm penetration for a fire dampener.

# External Installation



## 1. Fixing Top Hats to Frame

Determine the number of top hats required using the Pronto Panel Technical Manual. Install the top hats above and below openings. Top and bottom top hats are to be installed maximum 250mm from the end of Pronto Panel. Top hats must be discontinuous at control joints.



## 2. Mixing Pronto Panel Adhesive

The Pronto Panel Adhesive is a two-part thin bed adhesive mix. For the best results the use of an electric drill mixer (900W electric drill, Festo or the like) is recommended. Typical adhesive coverage rate is 60m<sup>2</sup>/20kg bag if the adhesive is used immediately after mixing.

## 3. Adhesive to Panel

Determine the number of screws required.

Fix Pronto Panels to top hats using 14-10x75mm Type 17 Bugle Batten Screw with countersunk ribbed head. Ensure screws are countersunk into panel and is covered by adhesive.

Apply Pronto Panel Adhesive to vertical joints. Install next panel.

## 4. Control Joints and Penetrations

Install control joints as per drawings and engineers requirements. All penetrations to have flashing tape and polyurethane sealant.

## 5. Coating System

Depending on aesthetic requirements, select a render system specified for Pronto Panel from the range on [www.prontopanel.com.au](http://www.prontopanel.com.au)



# About Brickworks Building Products™ and associated companies

## BRICKWORKS

BUILDING PRODUCTS

Brickworks Building Products is one of Australia's largest and most diverse building material manufacturers. Under the Brickworks Building Products umbrella are some of Australia's best known building materials brands. Our products include bricks, pavers, masonry blocks, retaining wall systems, precast concrete panels, concrete and terracotta roof tiles, timber products and specialised façade systems.



Austral Bricks add distinct style to any type of home. Their natural colours and textures enable you to create striking façade contrasts or more traditional neutral colour tones. By investing in new technology Austral Bricks now produce bricks with a variety of surface finishes, exciting colours and different sizes.



## BOWRAL BRICKS

The unique combination of traditional craftsmanship and modern technology will ensure that the Bowral Bricks brand will remain the benchmark for brick excellence for many years to come.



With a heritage reaching back to 1862, Nubrik™ premium-quality bricks are still moulded the traditional way on century-old presses. Their time-honoured expression of authenticity and elegance is acknowledged by architects, builders and discerning homebuyers who also value their rich colour blends, solidity and crisply-defined edges.

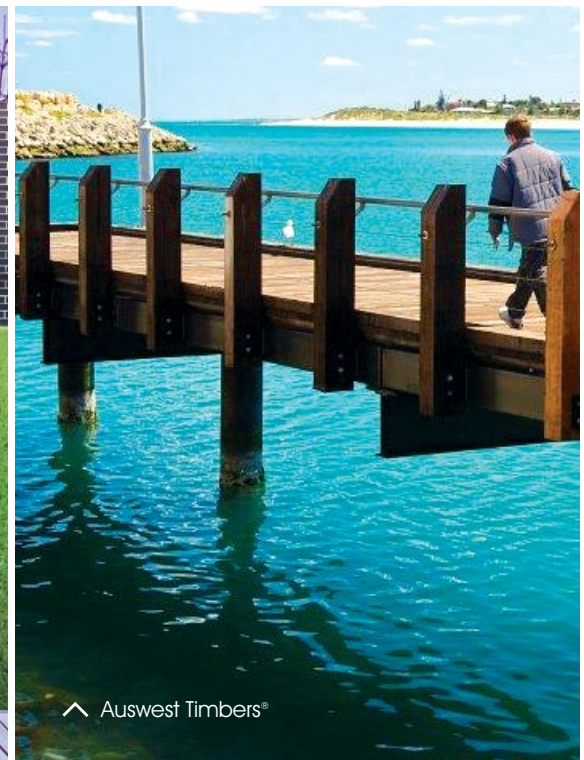
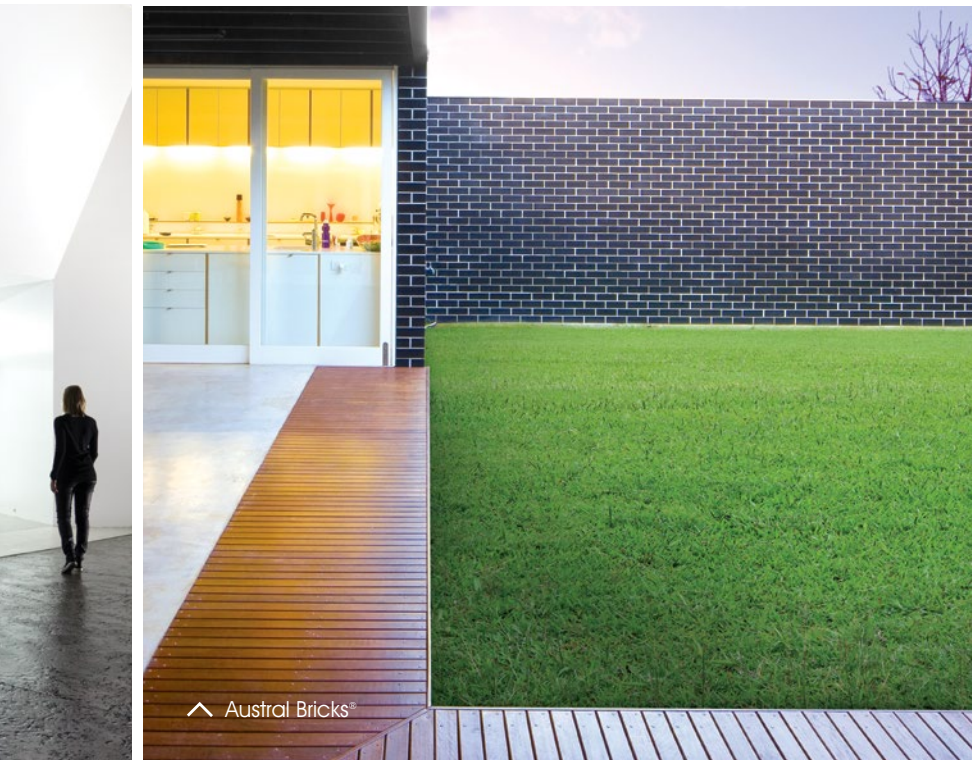


Since 1853, Daniel Robertson has helped build Australia with building products that combine craftsmanship with architectural excellence. In a world where qualities are constantly compromised, Daniel Robertson premium-quality clay bricks are highly prized for their unique character, earthy appeal and individual charm.



Austral Masonry is a leading manufacturer and supplier of concrete masonry products focused on providing functional but stylish solutions to the civil, residential, commercial and industrial building and construction markets. Our range of products includes standard grey concrete blocks, coloured architectural concrete blocks with a range of different finishes and a comprehensive range of retaining walls, pavers and garden edging. Founded in 1908, Austral Bricks is Australia's largest, best-known and most efficient clay brick and paver manufacturer.





In just a few years, Austral Precast has become Australia's premier supplier of high-quality, innovative and customisable precast concrete product solutions. Using state-of-the-art technology, production techniques and systems, our precast division produces a diversified range of wall, floor, column, and client specific precast solutions.



From production facilities in Western Australia, Victoria and the ACT, Auswest Timbers manufactures a diverse range of timber products. Jarrah, karri and chestnut timbers are processed into a range of decorative, seasoned products for furniture and joinery, flooring, decking, staircase components, veneers and fence screening.



Pronto Panel is a non-load bearing panel system that can be used both internally and externally. Pronto Panels durable, lightweight and simple nature makes it perfectly suitable for both residential and commercial applications.



For almost a century, Bristile Roofing has delivered stylish and innovative roofing products for Australian homes. Bristile is now one of Australia's largest manufacturers and installers of quality roof tiles and the exclusive Australian distributor of La Escandella premium quality clay roof tiles from Spain.



Façade systems are a cost-and time-efficient approach to cladding commercial and upscale residential buildings. The Terraçade™ system, developed in Australia by Brickworks Building Products, combines the visual appeal and colourfastness of terracotta with the low maintenance and functional efficiency demanded in today's competitive market.



## Pronto Panel Head Office National

62 Belmore Road  
Punchbowl NSW 2196

### Trading hours

For trading hours please call  
13 PANELS (13 726 357)

# Pronto Panel™

13 PANELS (13 726 357)

Email: [sales@prontopanel.com.au](mailto:sales@prontopanel.com.au)

[www.prontopanel.com.au](http://www.prontopanel.com.au)



proud supporters



The range of building products from  
**BRICKWORKS**  
BUILDING PRODUCTS

**australbricks**  
Since 1908  
Pronto Panel  
FASTER. BETTER. STRONGER.

**australprecast**  
**terracade**  
TERRACOTTA FACADE SYSTEM



**australmasonry**  
**nubrik**  
CONCRETE SYSTEMS

**bristilleroofing**  
 **BORAL BRICKS**

**auswesttimbers**